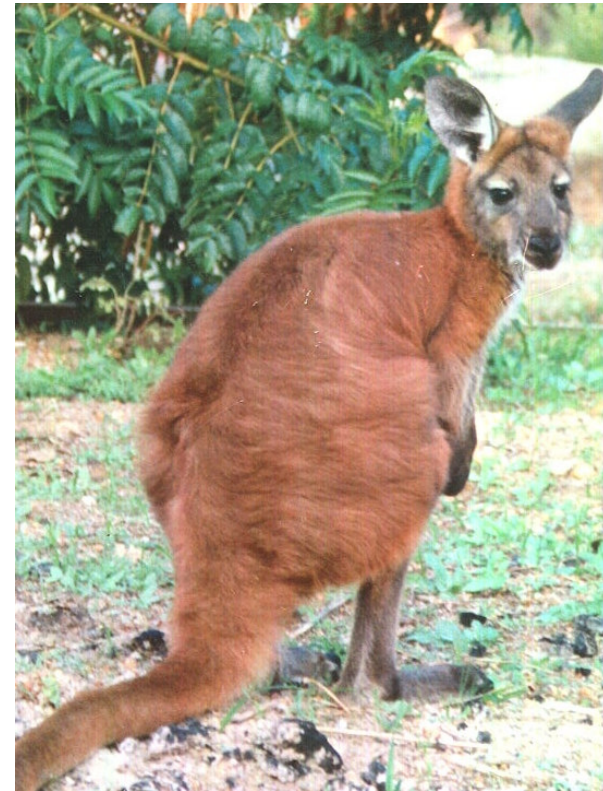


SPOT THE DIFFERENCE



Wallaroo
(male)

Robust and stocky body
Short and wide snout
Shaggy coat
Dark grey to black coat, white underparts
Thick hind legs and paws



Euro
(male)

Robust and stocky body
Short and wide snout
Shaggy coat
Red to red-brown coat, white underparts
Thick hind legs and paws

Photograph of Euro kindly supplied by Margaret Larner